



Looking for ways to boost hygiene in your facility?

Partner with Winc, Church Resources & Kimberly-Clark Professional™ to elevate your facility hygiene performance and enhance levels of care for residents and staff.



Recommended washroom range for optimum levels of performance & compliance



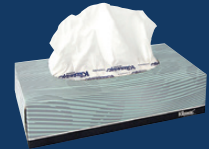
RESIDENT ROOMS:
In addition to hygiene benefits, the majority of KCP towel and tissue products are FSC® certified to ensure sustainability standards are met.



KITCHEN & DINING:
Many of our products are HACCP® certified to be suitable for use in contact with food preparation surfaces.



COMMON AREAS:
Ensuring that the right hand hygiene products are available, when and where they're needed, is key to helping staff and residents stay healthy.



KLEENEX® Toilet Tissue
White, 2 ply,
400 sheets/roll,
48 rolls/case.
CODE: 4735

- Premium quality 2 ply tissue



SCOTT® Toilet Tissue
White, 2 ply,
400 sheets/roll,
48 rolls/case.
CODE: 5741

- Quality 2 ply tissue



KLEENEX® Compact Jumbo Roll
White, 2 ply,
300m/roll,
6 rolls/case.
CODE: 5749

- High capacity 2 ply system delivering softness with user comfort in mind



SCOTT® Compact Jumbo Roll
White, 1 ply,
600m/roll,
6 rolls/case.
CODE: 5748

- High capacity 1 ply system reducing maintenance during peak times



KLEENEX® Facial Tissue
White, 2 ply,
100 tissues/pack,
48 packs/case.
CODE: 4720

- Blue signal sheet to indicate end of pack



○ 70260



○ 70210



KLEENEX® Frequent Use Hand Cleanser
1000ml cartridge,
6 cartridges/case.
CODE: 6333

- Liquid cleanser
- Fragrance free
- Suitable for public areas & food handling



KLEENEX® Luxury Foam Frequent Use Hand Cleanser
1000ml cartridge,
6 cartridges/case.
CODE: 6342

- Foam cleanser
- Fragrance & dye free
- Suitable for public areas & food handling



KLEENEX® Hair & Body Shower Gel
1000ml cartridge,
6 cartridges/case.
CODE: 6332

- Gel cleanser
- Luxurious lather cleanses skin & hair



○ 69480



○ 69480



○ 69480

Recommended **product** range for optimum levels of performance & compliance



**KLEENEX®
Compact Towel**
White, 29.5x19cm
90 towels/pack,
24 packs/case.
CODE: 4440

- Hygienic one-at-a-time dispensing
- Ideal where space constraints exist



**SCOTT®
Compact Towel**
White, 29.5x19cm
110 towels/pack,
16 packs/case.
CODE: 5855

- Hygienic one-at-a-time dispensing
- Space saving - ideal for small bathrooms



**SCOTT®
Optimum Towel**
White, 24x24cm,
150 towels/pack,
16 packs/case.
CODE: 4455

- Hygienic one-at-a-time dispensing
- Ideal size for hygienic hand drying



**SCOTT®
Multifold Towel**
White, 24x23.5cm,
250 towels/pack,
16 packs/case.
CODE: 13207

- Hygienic one-at-a-time dispensing
- Ideal size for hygienic hand drying



**SCOTT®
SLIMROLL
Hand Towel**
White, 176m/roll,
6 rolls/case.
CODE: 12388

- 70% recycled fibre
- Ideal for high traffic areas where space constraints exist



○ 70240



○ 70250



○ 70220



○ 70230



○ 7957



**WYPALL® X60
Single Sheet Wipers**
White, 28 x 35cm,
100 wipers/pack,
8 packs/case.
CODE: 94224

- Strong and flexible multi-purpose wiper
- Soft enough for personal cleansing and drying



**WYPALL® X60
Pop-up Poly Wipers**
White, 23 x 42.5cm
115 wipers/bag,
12 bags/case.
CODE: 94333

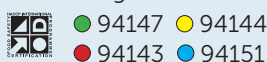
- Strong and flexible multi-purpose wipe.



WYPALL® Wipers
Blue, 60cm x 30cm,
20 wipers/pack,
12 packs/case.
CODE: 94151

- Single sheet colour coded wipers for task segregation

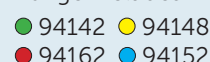
Range includes:



WYPALL® Wipers
Blue, 34cm x 45m,
106 wipers/roll,
6 rolls/case.
CODE: 94152

- Perforated roll format colour coded for task segregation

Range includes:



Toilets & Washrooms



Infection & isolation areas



Kitchens & food preparation

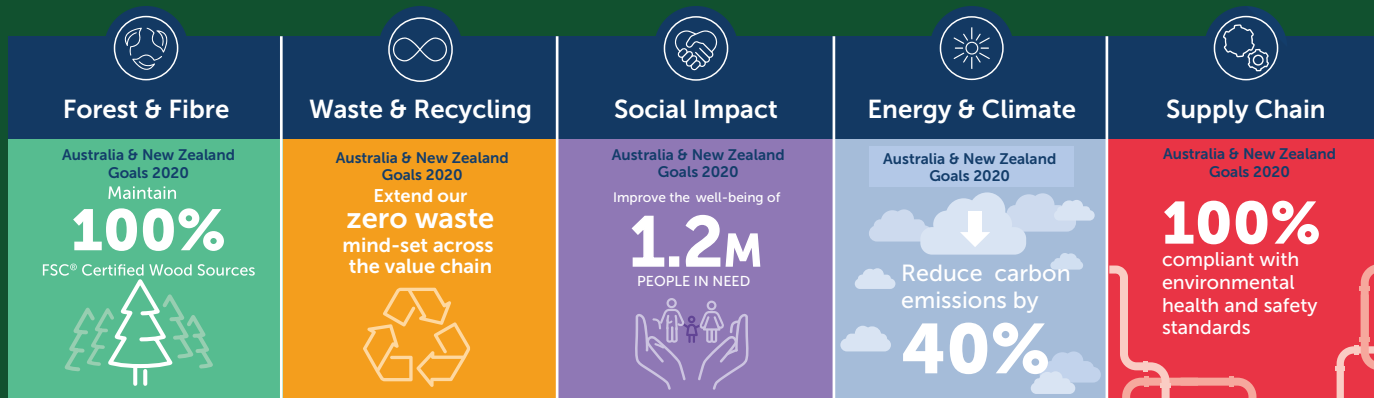


General Cleaning

Creating a better tomorrow

At Kimberly-Clark, we strive to deliver on our value of caring for the communities where we live and work, ensuring the environment around us and the people we serve will have a brighter future.

We set ambitious sustainability goals in five priority areas which enable us to have a lasting positive impact around the world.



The mark of responsible forestry

The products featured in this publication display FSC® logos from 4 certified manufacturing facilities in different countries:

AUSTRALIA FSC-C101606 CODES: 4720, 4735, 4440, 5741, 4455.
 KOREA/USA FSC-C103572 CODES: 12388, 13207, 5855.
 TAIWAN FSC-C017657 CODE: 5749.
 MALAYSIA FSC-C114474 CODE: 5748.

Ensures wood products are sourced from sustainably well managed forests.

Kimberly-Clark Professional™ independent and proprietary accreditations include...



"Fit for purpose" in food handling or processing applications.



Products are made with AIRFLEX® Technology to increase drying capacity and reduce waste.



Products are made with HYDROKNIT® Technology to increase absorbency and reduce waste.



Identifies products proven to be environmentally preferable.



We proudly manufacture a significant proportion of our toilet tissue and hand towels at our Millicent Mill in South Australia, supporting Australian manufacturing and communities



Guaranteed support: The answer to any queries you may have on any of our products is just a phone call or email away.

Australia: 1800 647 994 or kcprofessional.com.au/contact-us
New Zealand: 0800 447 814 or kcprofessional.co.nz/contact-us

© / ™ Trademarks Kimberly-Clark Worldwide, Inc. © KCWW.

church
resources
winc.

Shop online at winc.com.au